



ELECTRICAL SAFETY ACTIVITY SHEET

Recommended for Grades K-2

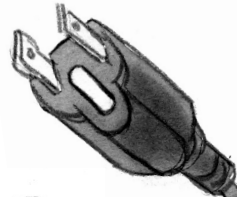
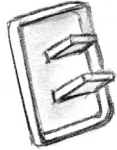
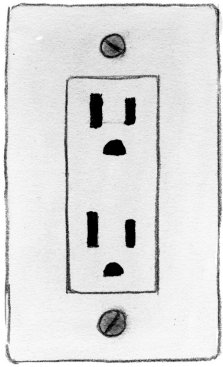
Visit us online at: xcelenergy.e-smartkids.com

Brought to you by:

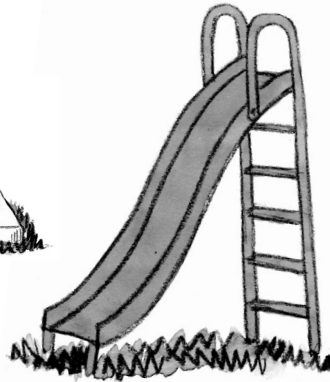
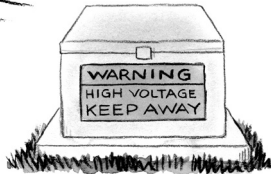
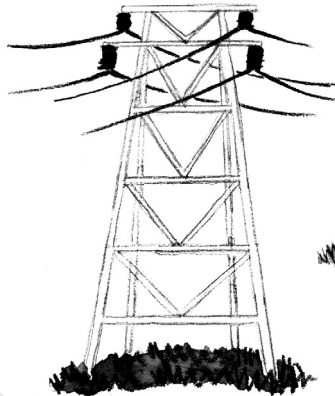


SAFE OR UNSAFE???

Put an **X** on the items that are **NOT SAFE** to put into an electrical outlet.



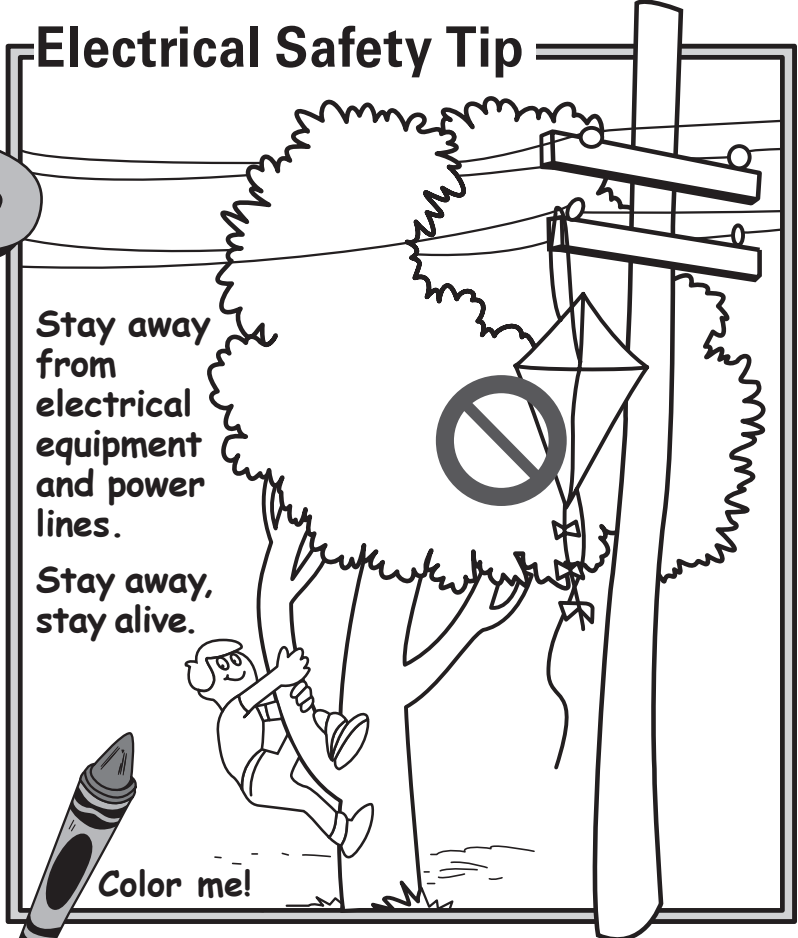
Put an **X** on the outdoor equipment that is **NOT SAFE** to climb.



Electrical Safety Tip

Stay away from electrical equipment and power lines.

Stay away, stay alive.



Color me!

- Put an **X** on the key, paper clip, and fork.
- Only the plug and the safety cap are safe to put into an outlet.
- Put an **X** on the substation, the tower, and the transformer box. Only the slide is safe to climb.

Electrical Safety Activity Answer Key



Know what's below. Call before you dig.



NATURAL GAS SAFETY ACTIVITY SHEET

Recommended for Grades K-2

Visit us online at: xcelenergy.e-smartkids.com

Brought to you by:

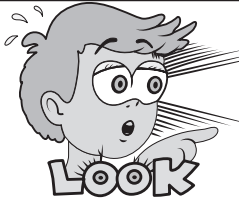


Common Sense **GAS SAFETY**

Use the words in the natural gas flame to complete the following sentences:



Use these _____ when you are around gas appliances.



The flame of natural gas is _____. If it is not that color, tell an adult.



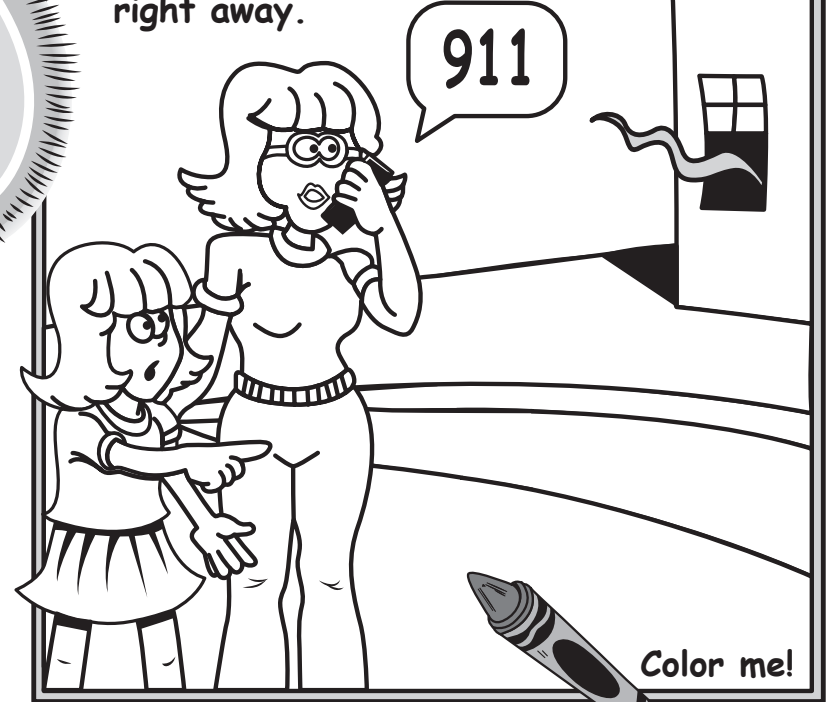
Sometimes there is no flame but you can hear a _____ sound. If you hear that sound, tell an adult.



When you smell an _____ of sulfur or rotten eggs, tell an adult.

Natural Gas Safety Tip

If you suspect that natural gas is leaking, get safely away and tell an adult right away.



- Use these **SENSES** when you are around gas appliances.
- The flame of natural gas is **BLUE**. If it is not that color, tell an adult.
- Sometimes there is no flame but you can hear a **HISSING** sound. If you hear that sound, tell an adult.
- When you smell an **ODOR** of sulfur or rotten eggs, tell an adult.

Natural Gas Safety Activity Answer Key

Call Before You Dig: Please call 811 if you plan to dig or move earth in any way—even just planting a tree or shrub. This free service will arrange for marking underground natural gas and electric lines so you can dig a safe distance away from them. After you call, wait your state's required time before digging—at least two to three working days.



Know what's below.
Call before you dig.