



ELECTRICAL SAFETY ACTIVITY SHEET

Recommended for Grade 7 through Adult

Visit us online at: www.e-smartonline.net/xcelenergy/

Brought to you by:  Xcel Energy

Make an Emergency Kit

Extreme weather events are becoming more frequent and severe. These supplies will help you stay self-sufficient if your home loses power and/or water during a weather emergency.

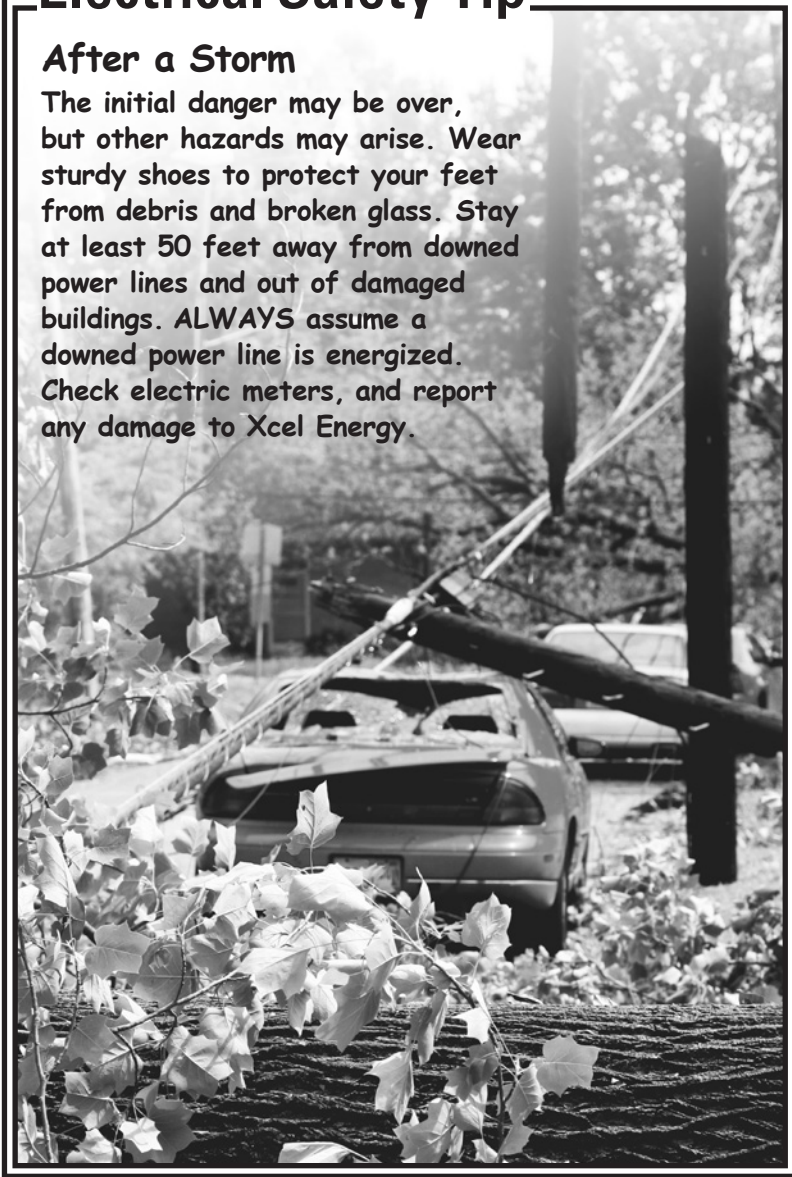
- Three-day supply of non-perishable food per person, can opener and pet food
- Three-day supply of water (one gallon per person per day, plus more for pets)
- Portable, battery-, hand-crank or solar-powered radio
- Flashlights and lanterns (safer than candles)
- Toilet paper, paper towels and hand wipes
- Special needs items, such as medications, items for infants, etc.
- Lighters or matches in a waterproof container
- Fire starter
- Personal hygiene supplies
- Cash (in case ATMs aren't working)
- A whistle to signal for help
- Signaling mirror
- First aid kit
- Extra batteries
- Spare blankets



Electrical Safety Tip

After a Storm

The initial danger may be over, but other hazards may arise. Wear sturdy shoes to protect your feet from debris and broken glass. Stay at least 50 feet away from downed power lines and out of damaged buildings. ALWAYS assume a downed power line is energized. Check electric meters, and report any damage to Xcel Energy.



Call Before You Dig: Please call 811 if you plan to dig or move earth in any way—even just planting a tree or shrub. This free service will arrange for marking underground natural gas and electric lines so you can dig a safe distance away from them. After you call, wait your state's required time before digging—at least two to three working days.



NATURAL GAS SAFETY ACTIVITY SHEET

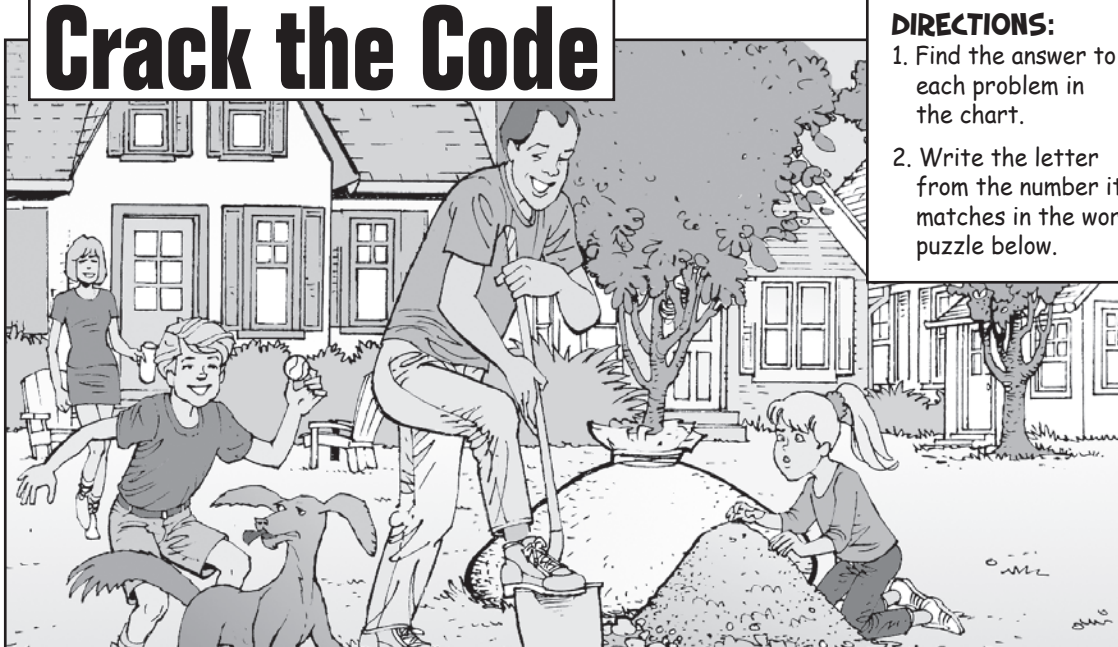
Recommended for Grade 7 through Adult

Visit us online at: www.e-smartonline.net/xcelenergy/

Brought to you by:



Crack the Code



DIRECTIONS:

1. Find the answer to each problem in the chart.
2. Write the letter from the number it matches in the word puzzle below.

PROBLEM	ANSWER	LETTER
$360 \div 5 =$		N
Number of states in the US =		R
$364 + 166 =$		D
Number of playing cards in a standard deck =		E
$\sqrt{25} \times \sqrt{1} =$		U
Solve for x: $15x - 10 = 20$		G
$30/6 \times 4/5 =$		O

Before digging, call 811 to have

5 72 530 52 50 2 50 4 5 72 530

utility lines marked so you can dig safely.

Natural Gas Safety Tip

When people dig, they must be careful not to damage underground gas pipes and power lines. If people dig into natural gas pipelines, the gas can leak out and become a fire hazard. Several business days before digging, adults should call 811 to have underground utilities located and marked.



Know what's below.
Call before you dig.

• Word solution: UNDERGROUND

• Math solutions: 5, 72, 530, 52, 50, 2, 50, 4, 5, 72, 530

Natural Gas Safety Activity Answer Key



Call Before You Dig: Please call 811 if you plan to dig or move earth in any way—even just planting a tree or shrub. This free service will arrange for marking underground natural gas and electric lines so you can dig a safe distance away from them. After you call, wait your state's required time before digging—at least two to three working days.